

	<b>Profil Profile</b>	<b>XL</b>	<b>L</b>	<b>H</b>	<b>XH</b>	<b>5M</b>	<b>8M</b>	<b>14M</b>
	Teilung Pitch $t$	5,08	9,525	12,7	22,225	5,00	8,00	14,00
Zahnwinkel Tooth angle $\beta$	50°	40°	40°	40°	—	—	—	—
Zahnhöhe Height of tooth $h_t$	1,27	1,90	2,30	6,35	2,06	3,38	6,00	—
Zahnbreite Width of tooth $s$	2,57	4,65	6,12	12,57	—	—	—	—
Ges.-Riemenhöhe Total belt thickness $h_s$	2,30	3,60	4,30	11,20	3,60	5,60	10,00	—

**Aufbau: Polyurethan mit Aramidzugstrang**  
**Construction: polyurethane with aramid tension cord**

Artikel- Bezeichnung Designation	Teilung Pitch (mm)	Riemenbreite Belt width (mm)	Stahlzugstrang Steel cord		Aramidzugstrang Aramid cord	
			ALPHA linear	ALPHA V Endlosverbindung Joining endless	ALPHA linear	ALPHA V Endlosverbindung Joining endless
XL 025•	5,080	6,35	—	—	■	■
XL 031•	5,080	7,94	—	—	■	■
XL 037•	5,080	9,53	—	—	■	■
XL 050•	5,080	12,70	—	—	■	■
XL 075•	5,080	19,05	—	—	■	■
XL 100•	5,080	25,40	—	—	■	■
L 037	9,525	9,53	■	—	■	■
L 050	9,525	12,70	■	■	■	■
L 075	9,525	19,05	■	■	■	■
L 100	9,525	25,40	■	■	■	■
L 150	9,525	38,10	■	■	■	■
L 200	9,525	50,80	■	■	■	■
L 300	9,525	76,20	■	■	—	—
L 400	9,525	101,60	■	■	—	—
H 050	12,700	12,70	■	■	■	■
H 075	12,700	19,05	■	■	■	■
H 100	12,700	25,40	■	■	■	■
H 150	12,700	38,10	■	■	■	■
H 200	12,700	50,80	■	■	■	■
H 300	12,700	76,20	■	■	■	■
H 400•	12,700	101,60	■	■	■	■
XH 100▲	22,225	25,40	■	■	—	—
XH 200▲	22,225	50,80	■	■	—	—
XH 300▲	22,225	76,20	■	■	—	—
XH 400▲	22,225	101,60	■	■	—	—
5M 10	5,000	10,00	■	■	—	—
5M 15	5,000	15,00	■	■	—	—
5M 20•	5,000	20,00	■	■	—	—
5M 25	5,000	25,00	■	■	—	—
5M 50	5,000	50,00	■	■	—	—
8M 20	8,000	20,00	■	■	—	—
8M 25	8,000	25,00	■	■	—	—
8M 30	8,000	30,00	■	■	—	—
8M 50	8,000	50,00	■	■	—	—
8M 85	8,000	85,00	■	■	—	—
8M 100	8,000	100,00	■	■	—	—
14M 25	14,000	25,00	■	■	—	—
14M 40	14,000	40,00	■	■	—	—
14M 55	14,000	55,00	■	■	—	—
14M 85	14,000	85,00	■	■	—	—
14M 100	14,000	100,00	■	■	—	—
14M 150	14,000	150,00	■	■	—	—

Mindestlänge für verschweißte Zahnriemen Minimum length for spliced timing belts		
Riemenbreite Belt width (mm)	Profil Profile	Mindestlänge Minimum length (mm)
— 50	L, H, 5M, 8M	700
— 50	XH, 14M	900
51 – 100	L, H, 5M, 8M	900
101 –	8M, 14M	1100

Weitere Ausführungen und Breiten auf Anfrage.  
 Further constructions and widths on request.  
 ▲ Mit PAZ-Gewebe With PAZ-fabric on tooth surface

Rollenlänge Length of roll: 50 m

Mindestmenge für verschweißte Zahnriemen  
 < 16 mm Breite: 2 Stück je Abmessung

Minimum quantities for spliced timing belts  
 < 16 mm width: 2 pieces per size

• Keine Lagerware. • Non stock items.

Profil Profile	T5	T10	T20	AT5	AT10	AT20	
Teilung Pitch	t	5,0	10,0	20,0	5,0	10,0	20,0
Zahnwinkel Tooth angle $\beta$	40°	40°	40°	50°	50°	50°	
Zahnhöhe Height of tooth $h_t$	1,20	2,50	5,00	1,20	2,50	5,00	
Zahnbreite Width of tooth s/b	2,65	5,30	10,15	2,50	5,00	10,00	
Ges.-Riemenhöhe Total belt thickness $h_s$	2,20	4,50	8,00	2,70	4,50	8,00	

**Aufbau: Polyurethan mit Aramidzugstrang**  
**Construction: polyurethane with aramid tension cord**

Artikel-Bezeichnung Designation	Teilung Pitch (mm)	Riemenbreite Belt width (mm)	Stahlzugstrang Steel cord		Aramidzugstrang Aramid cord	
			ALPHA linear	ALPHA V Endlosverbindung Joining endless	ALPHA linear	ALPHA V Endlosverbindung Joining endless
6 T5	5,0	6,0	■	—	■	■
8 T5	5,0	8,0	■	—	■	■
10 T5	5,0	10,0	■	—	■	■
12 T5	5,0	12,0	■	—	■	■
16 T5	5,0	16,0	■	—	■	■
20 T5	5,0	20,0	■	—	■	■
25 T5	5,0	25,0	■	—	■	■
32 T5	5,0	32,0	■	—	■	■
50 T5	5,0	50,0	■	—	■	■
75 T5	5,0	75,0	■	—	—	—
100 T5	5,0	100,0	■	—	—	—
10 T10	10,0	10,0	■	■	■	■
12 T10	10,0	12,0	■	■	■	■
16 T10	10,0	16,0	■	■	■	■
20 T10	10,0	20,0	■	■	■	■
25 T10	10,0	25,0	■	■	■	■
32 T10	10,0	32,0	■	■	■	■
40 T10	10,0	40,0	■	■	■	■
50 T10	10,0	50,0	■	■	■	■
75 T10	10,0	75,0	■	■	■	■
100 T10	10,0	100,0	■	■	■	■
150 T10	10,0	150,0	■	■	—	—
25 T20	20,0	25,0	■	■	■	■
32 T20	20,0	32,0	■	■	■	■
50 T20	20,0	50,0	■	■	■	■
75 T20	20,0	75,0	■	■	■	■
100 T20	20,0	100,0	■	■	■	■
150 T20	20,0	150,0	■	■	—	—
6 AT5	5,0	6,0	■	—	—	—
10 AT5	5,0	10,0	■	—	—	—
16 AT5	5,0	16,0	■	—	—	—
25 AT5	5,0	25,0	■	—	—	—
32 AT5	5,0	32,0	■	—	—	—
50 AT5	5,0	50,0	■	—	—	—
75 AT5	5,0	75,0	■	—	—	—
100 AT5	5,0	100,0	■	—	—	—
16 AT10	10,0	16,0	■	■	—	—
25 AT10	10,0	25,0	■	■	—	—
32 AT10	10,0	32,0	■	■	—	—
50 AT10	10,0	50,0	■	■	—	—
75 AT10	10,0	75,0	■	■	—	—
100 AT10	10,0	100,0	■	■	—	—
150 AT10	10,0	150,0	■	■	—	—
25 AT20	20,0	25,0	■	■	—	—
32 AT20	20,0	32,0	■	■	—	—
50 AT20	20,0	50,0	■	■	—	—
75 AT20	20,0	75,0	■	■	—	—
100 AT20	20,0	100,0	■	■	—	—
150 AT20	20,0	150,0	■	■	—	—

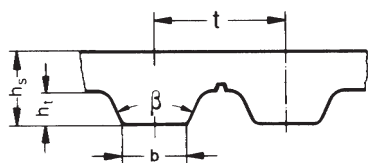
Mindestlänge für verschweißte Zahnriemen Minimum length for spliced timing belts		
Riemenbreite Belt width (mm)	Profil Profile	Mindestlänge Minimum length (mm)
— 50	T5, T10, AT5, AT10	700
— 50	T20, AT20	900
51 – 100	T5, T10, AT5, AT10, AT20	900
101 –	T10, T20, AT10, AT20	1100

Weitere Ausführungen und Breiten auf Anfrage.  
 Further constructions and widths on request.

Rollenlänge Length of roll: 50 m

Mindestmenge für verschweißte Zahnriemen  
 < 16 mm Breite: 2 Stück je Abmessung  
 Minimum quantities for spliced timing belts  
 < 16 mm width: 2 pieces per size

• Keine Lagerware. • Non stock items.



Type		ATL5	ATL10	ATL20
Teilung <i>Pitch</i>	t	5,0	10,0	20,0
Zahnwinkel <i>Tooth angle</i>	$\beta$	50°	50°	50°
Zahnhöhe <i>Height of tooth</i>	$h_t$	1,20	2,50	5,00
Zahnbreite <i>Width of tooth</i>	b	2,50	5,00	10,00
Ges.-Riemenhöhe <i>Total belt thickness</i>	$h_s$	2,70	4,50	8,00

### Stahlzugstrang *Steel cord*

Artikel- Bezeichnung <i>Designation</i>	Teilung <i>Pitch</i> (mm)	Riemenbreite <i>Belt width</i> (mm)
16 ATL 5	5,0	16,0
25 ATL 5	5,0	25,0
32 ATL 5	5,0	32,0
50 ATL 5	5,0	50,0
75 ATL 5•	5,0	75,0
100 ATL 5•	5,0	100,0
25 ATL10•	10,0	25,0
32 ATL10	10,0	32,0
50 ATL10	10,0	50,0
75 ATL10	10,0	75,0
100 ATL10	10,0	100,0
150 ATL10•	10,0	150,0
25 ATL20•	20,0	25,0
32 ATL20	20,0	32,0
50 ATL20	20,0	50,0
75 ATL20	20,0	75,0
100 ATL20	20,0	100,0
150 ATL20•	20,0	150,0

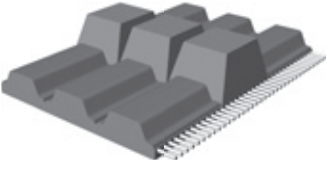
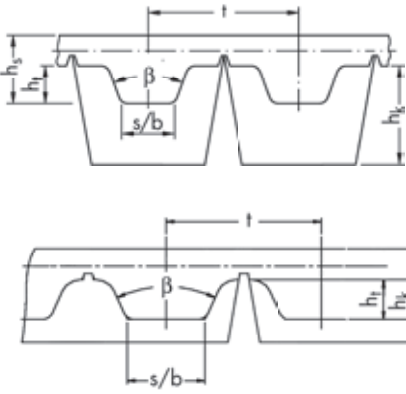
#### Mindestlänge für verschweißte Zahnriemen *Minimum length for spliced timing belts*

Riemenbreite <i>Belt width</i> (mm)	Profil <i>Profile</i>	Mindestlänge <i>Minimum length</i> (mm)
– 50	ATL5, ATL10	700
– 50	ATL20	900
51 – 100	ATL5, ATL10, ATL20	900
101 –	ATL10, ATL20	1100

Weitere Ausführungen und Breiten auf Anfrage.  
*Further constructions and widths on request.*

Rollenlänge *Length of roll*: 50 m

• Keine Lagerware. • *Non stock items.*

		<b>Type</b>	<b>T5</b>	<b>T10</b>	<b>AT10</b>	
		Teilung <i>Pitch</i>	t	5,0	10,0	10,0
		Zahnwinkel <i>Tooth angle</i>	$\beta$	40°	40°	50°
		Zahnhöhe <i>Height of tooth</i>	ht	1,20	2,50	2,50
		Zahnbreite <i>Width of tooth</i>	s/b	2,65	5,30	5,00
		Ges.-Riemenhöhe <i>Total belt thickness</i>	hs	2,20	4,50	4,50

**Aufbau: Polyurethan mit Stahlzugstrang**  
**Construction: Polyurethane with steel wire cord**

<b>KEIL gekerbt – extrudiert <i>Notched V-Guide – extruded</i></b>		
Artikel- Bezeichnung <i>Designation</i>	Keilleiste (Breite x Höhe / h <sub>k</sub> ) <i>V-Guide (Width x Height / h<sub>k</sub>)</i>  (mm)	Riemenbreite <i>Belt width</i>  (mm)
25 T5K6• 32 T5K6• 50 T5K6 75 T5K6• 100 T5K6	6 x 4 6 x 4 6 x 4 6 x 4 6 x 4	25,0 32,0 50,0 75,0 100,0
25 T10K6• 32 T10K6• 50 T10K6 75 T10K6• 100 T10K6	6 x 4 6 x 4 6 x 4 6 x 4 6 x 4	25,0 32,0 50,0 75,0 100,0
32 T10K13• 50 T10K13 75 T10K13• 100 T10K13	13 x 6,5 13 x 6,5 13 x 6,5 13 x 6,5	32,0 50,0 75,0 100,0
25 AT10K6• 32 AT10K6• 50 AT10K6 75 AT10K6• 100 AT10K6	6 x 4 6 x 4 6 x 4 6 x 4 6 x 4	25,0 32,0 50,0 75,0 100,0
32 AT10K13• 50 AT10K13 75 AT10K13• 100 AT10K13	13 x 6,5 13 x 6,5 13 x 6,5 13 x 6,5	32,0 50,0 75,0 100,0

<p>Mindestlänge für verschweißte Spur Zahnriemen: <i>Minimum lengths for spliced self tracking belts:</i></p> <p>T5 / T10 / AT10 = 1000 mm</p> <p>Rollenlänge <i>Length of roll</i>: 50 m</p>	<p>Auf Wunsch mit PAZ-Gewebe <i>Optional with PAZ-fabric on tooth surface</i></p> <p>Weitere Ausführungen und Breiten auf Anfrage. <i>Further constructions and widths on request.</i></p> <p>• Keine Lagerware. • <i>Non stock items.</i></p>
---	--